

600x
1200mm

COLLECTION 2021

BRIDH
ceramica

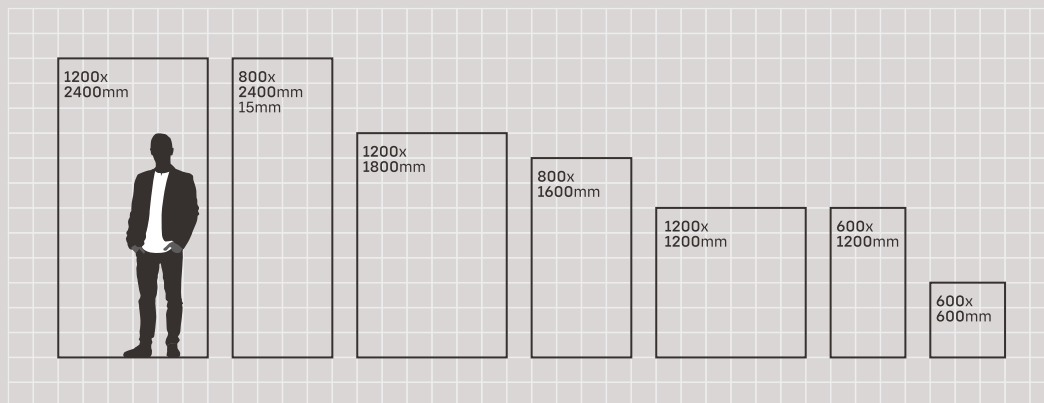
INTRODUCTION

600x1200mm

We bring you a grand collection of tiles that are available in various sizes. These tiles are designed to create grand urban spaces with their incredible designs and exceptional styles. The 600x1200mm slabs give a

delightful ambience to a space with its aesthetically rich design options. This size fits well with all kinds of indoor and outdoor spaces as it is compact yet large enough to give a feel of grandeur to a place.

**ONE LOCATION,
VARIED SIZE OPTIONS.**



FINISHES + SIZE



**MARMI SERIES
PGVT**



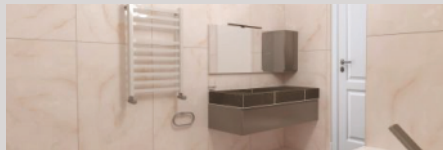
**CAMP SERIES
MATT**



**DESIRE SERIES
HIGH GLOSS**



**EGON SERIES
CARVING MATT**



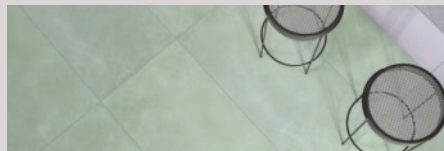
**LUST PRIME SERIES
MULTI COLOR PGVT**



**LUST ULTIMA SERIES
MULTI COLOR HIGH GLOSS**



**CHROMATIC SERIES
CHROMATIC HIGH GLOSS**



**CHROMATIC SERIES
CHROMATIC GRANULA MATT**



IDEAL FORMAT

Our slabs provide the ideal size that can be installed in all types of big and small places. These tiles are designed keeping in mind the requirements of modern interior design style.



CUSTOMIZATION

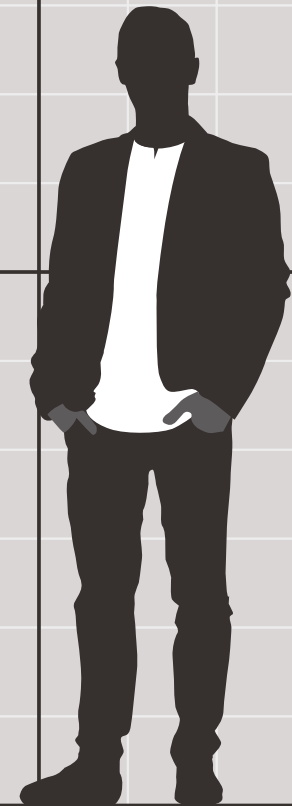
Our slabs are easy to customise making them perfectly fit for different applications and spaces.



EASY INSTALLATION

We break the myth of large-sized tiles being difficult to install with our mega-sized slabs that are super easy to handle and install.

600x
1200mm



FEATURES + BENEFITS

SLABS THAT
CREATE ELEGANT AND
COMFORTABLE SPACES

- ☀️ **Highly UV Resistant**
- 💎 **Scratch Resistant**
- 👉 **Resistant to Stains**
- 🔥 **Maximum Resistance to Fire and Heat**
- 🌀 **Resistant to Abrasion**
- ❄️ **Resistance to Freezing and Thawing**
- 👊 **Superior Mechanical Resistance**
- 💧 **Low Water Absorption**
- 📏 **Dimensional Stability**
- 🚒 **Fireproof Material**

BRIDH
ceramica

NATURE'S CREATION

Born from the crest of creation, our tiles reflect the exceptional beauty of nature through their excellent designs that create a glorious ambience for a space.

LOW-MAINTENANCE TILES

We offer tiles that provide a chance to create a fully functional and low maintenance space with its various features that create a comfortable lifestyle.

APPLICATION AREAS

BRIDH
ceramica

SLABS WITH DIVERSE APPLICATIONS AND EXCELLENT STYLE

We provide a complete tiling solution with our tiles that are easily applicable to many residential as well as commercial spaces. With the multiple sizes, our tiles fit perfectly with every space. Their diverse designs

create a compelling atmosphere and give a graceful look to a place. These tiles provide an extremely comfortable lifestyle with their low-maintenance quality and ability to various applications.



LIVING ROOM



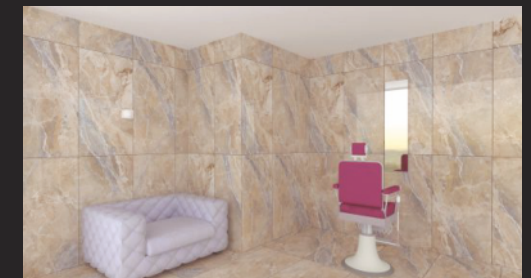
KITCHEN COUNTERTOP



BATHROOM



CORPORATE OFFICE



SALON & SPA



KITCHEN



HOTEL & RESTAURANT

CHROMATIC GRANULA MATT
— 600x1200mm

CLOUD OPACO ANGEL



Finish - **CHROMATIC GRANULA MATT**
Random - 5

WALL & FLOOR — **CLOUD OPACO ANGEL**, 600x1200mm

CHROMATIC GRANULA MATT
— 600x1200mm

CLOUD OPACO CLASSIC



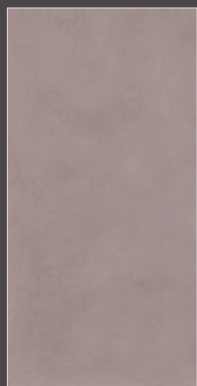
Finish - **CHROMATIC GRANULA MATT**
Random - 5



FLOOR — **CLOUD OPACO CLASSIC**, 600x1200mm

CHROMATIC GRANULA MATT
— 600x1200mm

CLOUD OPACO CRUSH



Finish - **CHROMATIC GRANULA MATT**
Random - 5



WALL & FLOOR — **CLOUD OPACO CRUSH**, 600x1200mm

CHROMATIC GRANULA MATT
— 600x1200mm

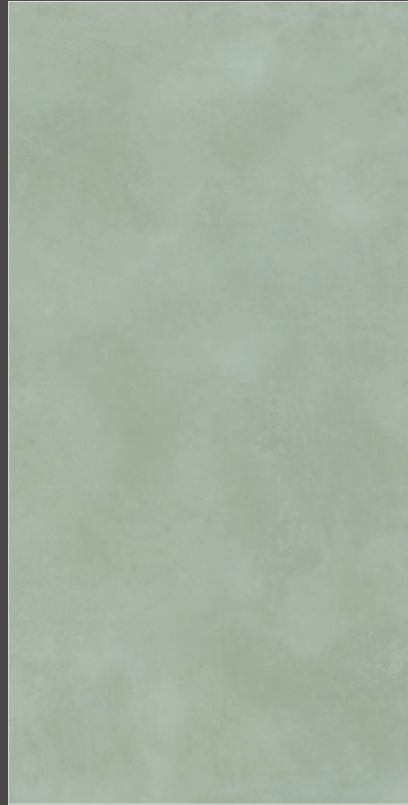
BRIDH
ceramica

CLOUD OPACO WILLOW



Finish - **CHROMATIC GRANULA MATT**
Random - 5

CLOUD OPACO FOREST



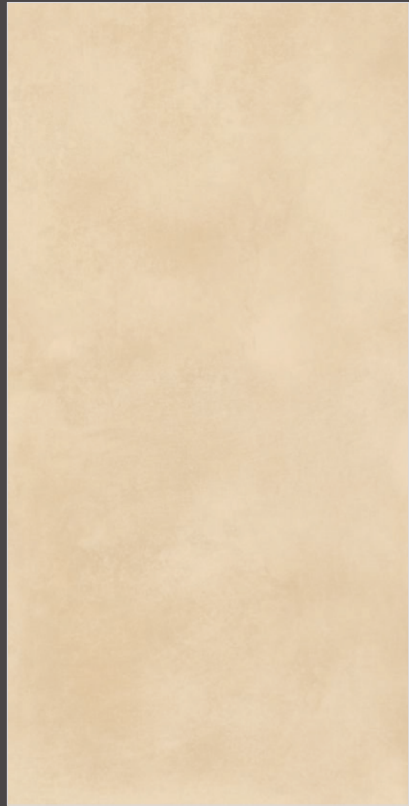
Finish - **CHROMATIC GRANULA MATT**
Random - 5



FLOOR — **CLOUD OPACO FOREST**, 600x1200mm

CHROMATIC GRANULA MATT
— 600x1200mm

CLOUD OPACO FOSSIL



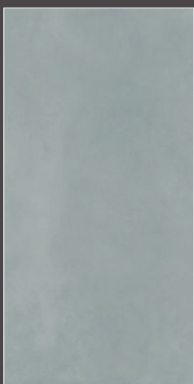
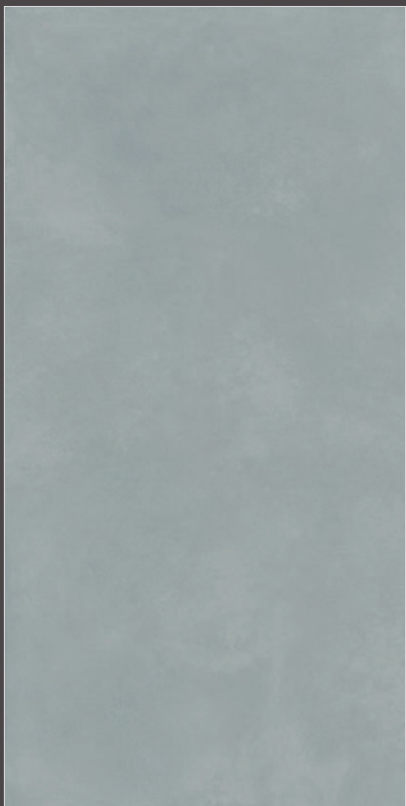
Finish - **CHROMATIC GRANULA MATT**
Random - 5



FLOOR — **CLOUD OPACO FOSSIL**, 600x1200mm

CHROMATIC GRANULA MATT
— 600x1200mm

CLOUD OPACO STREAM



Finish - **CHROMATIC GRANULA MATT**
Random - 5



WALL & FLOOR — **CLOUD OPACO STREAM**, 600x1200mm

Technical Specification

CHARACTERISTIC	INTERNATIONAL STANDARD ISO13006:2012/EN14411 Group BIa	MEAN VALUE OF OUR TILES	TEST METHOD
Dimension & Surface Quality			
length	± 0.60 %	± 0.10 %	ISO 10545-2
Thickness	± 5.00 %	± 3.00 %	ISO 10545-2
Straightness in side	± 0.50 %	± 0.10 %	ISO 10545-2
Rectangularity	± 0.50 %	± 0.10 %	ISO 10545-2
Surface flatness	± 0.50 %	± 0.510 %	ISO 10545-2
Surface quality	Declared by Manu.	95~105 %	ISO 2813(Gloss Meter)
Glossiness (only Polished Products)	Min. 95% Tile Should Be Free From Defects	Min. 98% Tile Should Be Free From Defects	ISO 10545-2
Physical Characteristics			
Water absorption	E ≤ 0.5 %	E ≤ 0.5 %	ISO 10545-3
MOH'S hardness	≤ 6	≤ 6	ISO 10545-3
Moisture expansion	Nil	Nil	ISO 10545-10
Abrasion resistance	Declared by Manu.	Pei 3~5 (Declared on product)	ISO 10545-7
Mechanical Characteristics			
Flexural strength(MOR)	≥ 35N/mm ² (350kg/cm ²)	≥ 37N/mm ² (370kg/cm ²)	ISO 10545-4
Breaking strength	1300 Newton	2000 Newton	ISO 10545-4
Impact resistance	Declared by Manu.	No indentation or cracking	ISO 10545-5
Safety Characteristics			
Skid resistance(Dynamic Friction Coefficient)	≥ 0.4	≥ 0.4	ISO 10545-17
Density	≥ 2.0 gm/cc	≥ 2.3 gm/cc	DIN 51082
Thermo Photo Characteristics			
Thermal shock resistance	Resistant to 10 cycles	Pass Min. 10 cycles	ISO 10545-9
Frost resistance	Frost Proof	Need to comply with the standard	ISO 10545-12
Coefficient of Linear thermal Expansion	9x10 ⁻⁶ K-1	<5.86x10 ⁻⁶ K-1	ISO 10545-8
Color resistance to UV light	Resistant	Resistant	ISO 10545-16
Chemical Characteristics			
Chemical resistance: House Hold Chemicals & Swimming Pool Salts	Min. Class - GB	Confirm to Classes - GA	ISO 10545-13
Chemical resistance: Low Concentrations Acids & Alkalis	Min. Class - GIB	Confirm to Classes - GIA	ISO 10545-13
Chemical resistance: High Concentrations Acids & Alkalis	Min. Class - GHB	Confirm to Classes - GHA	ISO 10545-13
Stain resistance	Min. Class - 3	Min. Confirm to Class - 4	ISO 10545-14

Packing Details

DIMENSION(MM)	600x1200mm
SLAB / BOX	2 pcs
COVERAGE AREA / BOX	1.44 sq. mtr.
WEIGHT / BOX (APPROX)	28.5 kg

BRIDH

ceramica



DHAVAL BHATT
(Director)
+91 9702382809



BRIDH CERAMICA

Block No.2, Rameshwar Society, Sanala Road, Opp. GIDC,
Morbi - 363642. (Gujarat) INDIA.



dbhat16@gmail.com | dhaval@bridhceramica.com